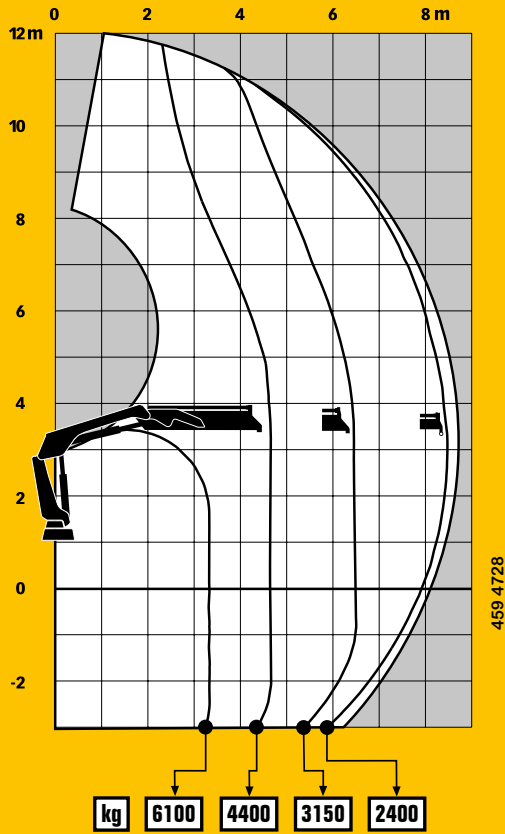
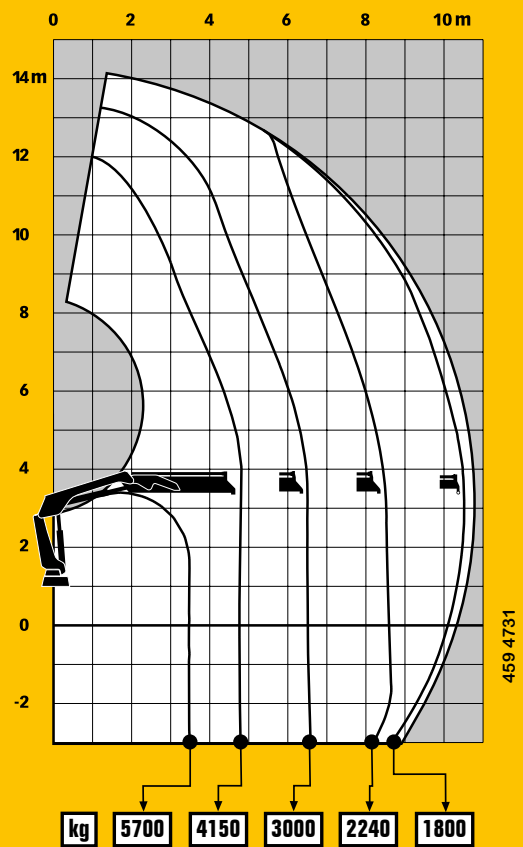




# EFFER 230C B-2



# EFFER 230C B-3



**Legenda** B: without links - D: links on 2nd boom - E: links on 1st and 2nd boom - S: short boom



The C versions are manually controlled loader cranes. Optional XS Drive Light (4 lever) remote controls is available. For non CE markets.

## CRANE DESIGNED ACCORDING TO STANDARDS UNI EN 12999 HC1 S1 HD4

The configurations and figures contained in the brochure are illustrative. For information on the complete offer and for more technical details, ask your EFFER dealer or consult the website [www.effer.com](http://www.effer.com). The above data are subject to change. Lifting capacity is based on the maximum lifting power of the crane. The stability of the truck may require a reduction of lifting capacity.

Hiab is the world's leading provider of on-road load handling equipment, intelligent services, smart and connected solutions. Hiab's class-leading load handling equipment includes HIAB, EFFER and ARGOS loader cranes, LOGLIFT and JONSERED forestry and recycling cranes, MOFFETT and PRINCETON truck mounted forklifts, MULTILIFT skiploaders and hooklifts, and tail lifts under the ZEPRO, DEL, and WALTCO brands. As the industry pioneer and with a proud 75 year history, Hiab is committed to be the preferred partner and solution provider to its customers and shape the future of intelligent load handling. [www.hiab.com](http://www.hiab.com)  
Hiab is part of Cargotec Corporation. [www.cargotec.com](http://www.cargotec.com)

EFFER S.p.A.

Via IV Novembre, 12 | 40061 Minerbio (BO) Italy  
Tel. +39 051 4181211 | [contact@effer.com](mailto:contact@effer.com)  
[www.effer.com](http://www.effer.com) | [www.effermarine.com](http://www.effermarine.com)  
EFFER is part of HIAB

